

USING TELEHEALTH TO IMPROVE ACCESS TO CARE FOR HUMANS AND ANIMALS IN UNDERSERVED AREAS



Patient & Provider Outcomes

The **One Health** model of health has allowed our interdisciplinary team to take steps to improving access to care for humans and animals in underserved areas through telehealth.

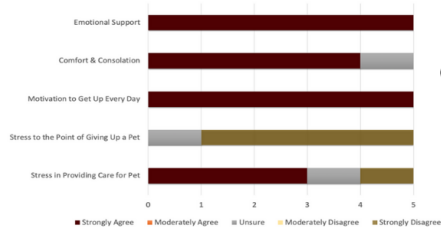


Services received by animal patients included full examination, heartworm testing, treatment of minor injuries, and 1 year flea/ tick prevention medication

Our **one day outreach** allowed us to serve 5 human clients and 13 animal patients.

Appointment & Medication + Veterinary Staff = **\$6754** total value of services provided during outreach

Table 1: Pet-owners Self-Report of Perceptions of Pet Impact on Mental Health (N=5*)



The data for this table was also collected during our outreach, demonstrating role of pets on human clients' mental health

Animals who participated are also eligible for **two VirtualVet telehealth follow-ups** and an additional round of medications.



Adding an additional **\$1636** to the value of services, increasing the total value of services and products to **\$8390**

What was Accomplished?



Our **interdisciplinary team** included faculty members, graduate students, and undergraduate students of 6 disciplines (Architecture, Biology & Biomedical Sciences, Education, Medicine, Veterinary Medicine, and Pharmacy) from 3 universities (Texas A&M University, University of Texas, and University of Houston).



We completed **TeamSTEPPS** to establish ground rules and facilitate a collaborative and communicative approach to patient care.

The Interprofessional Education Collaborative core competencies for interprofessional collaborative practices of **values/ethics, roles/ responsibilities, interprofessional communication, and teams and teamwork** were considered when selecting impactful feedback to present.

"From when our cars arrived at the locations there was no confusion in our activities...tasks were duly assigned to each group and they carried it out easily."

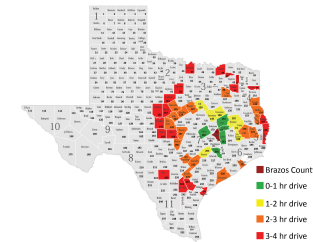
"It was obvious that everyone's goal was to provide the best care possible for the pets and their families"

Additional Advancements of this Project



Information Matrix	Function	Animals	People
	Form	<ul style="list-style-type: none"> Small animals to be treated It is Texas Law that veterinarians need to physically touch the animal to establish the patient-client relationship 	<ul style="list-style-type: none"> Human care will be via telehealth Providing primary care
	Site	<ul style="list-style-type: none"> Within a few hours driving distance from College Station 250 Agrilife Extension offices in 254 counties 	<ul style="list-style-type: none"> Separation of care experiences

Travel time from Brazos County



Goal: The main goal of this project is to deliver care to animals and humans in a One Health mobile unit to those in underserved areas of Texas.

Program (Above): An architectural programming method was used to establish the goals, facts, concepts, needs, and problems needed to develop and provide the delivery of care model.

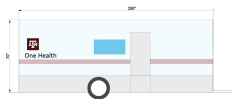
Location (Left): Potential sites for the pilot program were decided based on health professional shortage areas surrounding Brazos County and the travel time from College Station.

Involvement (Below): The architecture team designed a variety of mobile units based off of the information from the architectural program.
Team members: Kinjal Shah, Luis Garibay, Miriam Gallegos, Anna Boutwell

20' Bumperpull Trailer - Floor plan



20' Bumperpull Trailer - Elevation



32' Gooseneck Trailer - Floor plan



32' Gooseneck Trailer - Elevation

